



## Temperature Sensitive Terminal EYECAP-CPT-1H

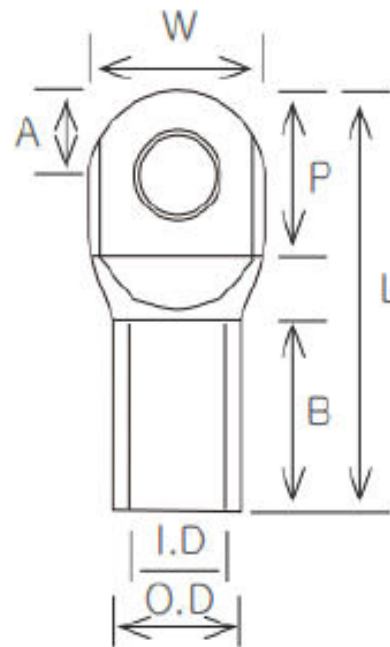
### Key Features:

- ✓ Bare eye overheat inspection possible for the colored part without separate equipment for pre-detection of improper installation.
- ✓ Prevention effect of power failure and fire.
- ✓ Temperature detection functions at the terminal lug (color change to white at 50°C).
- ✓ UL 94-V0 incombustible material.
- ✓ Not melting on high temperature, does not generate hazardous gas.
- ✓ Overheat detection by temperature sensitive inner part with reversible color change.
- ✓ Inspection with the naked eye increase efficiency and reduces 80% of the costs.
- ✓ The world first safety Temperature Sensitive Terminal which made of Silicon.
- ✓ Detection of Thermal burn on wire to terminal connection parts, such as wire harness at power distribution panel.
- ✓ One system with terminal and silicon part which is sensitive to temperature to prevent accident at a glance.

### Main Applications:

- Manufacturing equipment.
- Energy distribution cabinets.
- Power stations.
- Power distribution stations.
- Railways and airports.
- Hospitals.
- Buildings.
- Construction and infrastructure networks.
- Electronic industries.
- Military and Medical large scale systems.

### Product view:



ISO 9001, CE | REACH, RoHS | KERI (ARC Resistance test) | UL | CTK (Temperature test)

Max. Operating Voltage & Temperature: 600 VRMS / 150°C

# EYECAP-Tubular Terminal Lug for temperature change - 1 Hole

## Product List, Parameters & Specifications

No	Tamuz p/n:	Product dimensions (mm) (Tolerances: ID/OD $\pm$ 0.1mm , Others $\pm$ 0.5mm)								Color	Packing (pcs/bag)
		I.D	O.D	L	B	W	P	A	Hole(pi)		
1	E-CPT1H-25R	6.7	9	37	15	13	18	8	8.4	Red	100
2	E-CPT1H-25B	6.7	9	37	15	13	18	8	8.4	Blue	100
3	E-CPT1H-25Y	6.7	9	37	15	13	18	8	8.4	Yellow	100
4	E-CPT1H-25G	6.7	9	37	15	13	18	8	8.4	Green	100
5	E-CPT1H-25BK	6.7	9	37	15	13	18	8	8.4	Black	100
6	E-CPT1H-35R	8.1	10.5	43	17	15	21	10	10.4	Red	100
7	E-CPT1H-35B	8.1	10.5	43	17	15	21	10	10.4	Blue	100
8	E-CPT1H-35Y	8.1	10.5	43	17	15	21	10	10.4	Yellow	100
9	E-CPT1H-35G	8.1	10.5	43	17	15	21	10	10.4	Green	100
10	E-CPT1H-35BK	8.1	10.5	43	17	15	21	10	10.4	Black	100
11	E-CPT1H-50R	9.5	12	48	20	17	22	10	10.4	Red	100
12	E-CPT1H-50B	9.5	12	48	20	17	22	10	10.4	Blue	100
13	E-CPT1H-50Y	9.5	12	48	20	17	22	10	10.4	Yellow	100
14	E-CPT1H-50G	9.5	12	48	20	17	22	10	10.4	Green	100
15	E-CPT1H-50BK	9.5	12	48	20	17	22	10	10.4	Black	100
16	E-CPT1H-70R	11.3	14.5	55	23	21	25	13	10.4	Red	50
17	E-CPT1H-70B	11.3	14.5	55	23	21	25	13	10.4	Blue	50
18	E-CPT1H-70Y	11.3	14.5	55	23	21	25	13	10.4	Yellow	50
19	E-CPT1H-70G	11.3	14.5	55	23	21	25	13	10.4	Green	50
20	E-CPT1H-70BK	11.3	14.5	55	23	21	25	13	10.4	Black	50
21	E-CPT1H-95R	13.5	17	61	25	24.5	28	13	13	Red	50
22	E-CPT1H-95B	13.5	17	61	25	24.5	28	13	13	Blue	50
23	E-CPT1H-95Y	13.5	17	61	25	24.5	28	13	13	Yellow	50
24	E-CPT1H-95G	13.5	17	61	25	24.5	28	13	13	Green	50
25	E-CPT1H-95BK	13.5	17	61	25	24.5	28	13	13	Black	50
26	E-CPT1H-120R	15.2	19	64	28	28.5	28	14	13	Red	30
27	E-CPT1H-120B	15.2	19	64	28	28.5	28	14	13	Blue	30
28	E-CPT1H-120Y	15.2	19	64	28	28.5	28	14	13	Yellow	30
29	E-CPT1H-120G	15.2	19	64	28	28.5	28	14	13	Green	30
30	E-CPT1H-120BK	15.2	19	64	28	28.5	28	14	13	Black	30



No	Tamuz p/n:	Product dimensions (mm) (Tolerances: ID/OD $\pm$ 0.1mm , Others $\pm$ 0.5mm)								Color	Packing (pcs/bag)
		I.D	O.D	L	B	W	P	A	Hole(pi)		
31	E-CPT1H-150R	17	21	75	32	30.5	33	15	13	Red	30
32	E-CPT1H-150B	17	21	75	32	30.5	33	15	13	Blue	30
33	E-CPT1H-150Y	17	21	75	32	30.5	33	15	13	Yellow	30
34	E-CPT1H-150G	17	21	75	32	30.5	33	15	13	Green	30
35	E-CPT1H-150BK	17	21	75	32	30.5	33	15	13	Black	30
36	E-CPT1H-185R	19	23.5	80	34	34	34	15	13	Red	20
37	E-CPT1H-185B	19	23.5	80	34	34	34	15	13	Blue	20
38	E-CPT1H-185Y	19	23.5	80	34	34	34	15	13	Yellow	20
39	E-CPT1H-185G	19	23.5	80	34	34	34	15	13	Green	20
40	E-CPT1H-185BK	19	23.5	80	34	34	34	15	13	Black	20
41	E-CPT1H-240R	22	28	87	38	40	36	16	13	Red	10
42	E-CPT1H-240B	22	28	87	38	40	36	16	13	Blue	10
43	E-CPT1H-240Y	22	28	87	38	40	36	16	13	Yellow	10
44	E-CPT1H-240G	22	28	87	38	40	36	16	13	Green	10
45	E-CPT1H-240BK	22	28	87	38	40	36	16	13	Black	10
46	E-CPT1H-300R	24	30.5	100	43	44	43	19	13	Red	10
47	E-CPT1H-300B	24	30.5	100	43	44	43	19	13	Blue	10
48	E-CPT1H-300Y	24	30.5	100	43	44	43	19	13	Yellow	10
49	E-CPT1H-300G	24	30.5	100	43	44	43	19	13	Green	10
50	E-CPT1H-300BK	24	30.5	100	43	44	43	19	13	Black	10
51	E-CPT1H-400R	26	34	109	50	48	45	19	13	Red	10
52	E-CPT1H-400B	26	34	109	50	48	45	19	13	Blue	10
53	E-CPT1H-400Y	26	34	109	50	48	45	19	13	Yellow	10
54	E-CPT1H-400G	26	34	109	50	48	45	19	13	Green	10
55	E-CPT1H-400BK	26	34	109	50	48	45	19	13	Black	10

Remarks:

1. Dot part with irreversible color change: Only for E-SIT-A-50 size and above.
2. Cross reference: (EYECAP p/n: EYECAP-SIT(A)-nnnaa) = (Tamuz p/n: E-SIT-A-nnaa).
3. The wire size (AWG/mm<sup>2</sup>) is for reference only. The appropriate SIT model, will be defined by the actual outer diameter and size of the wire and the terminal in use.
4. Dimensions are shown for reference purposes only and in millimeters unless otherwise specified.
5. Product specifications are subject to change without notice.

